



**ORDER TO ESTABLISH A TRAFFIC REGULATION
RESTRICTING TRAFFIC ZONES**

BE IT REMEMBERED that on the 16th day of October, 2024, the Grimes County Commissioners Court convened in a duly called and noticed meeting.

WHEREAS, the Commissioners Court of Grimes County, Texas has determined that traffic control measures restricting the use of specific County Roads by certain vehicles is necessary to protect the health, safety, and welfare of the public and to preserve the existing condition of the road; and

WHEREAS, Section 251.151 of the Texas Transportation Code provides authority for the Grimes County Commissioners Court to regulate traffic on County Roads; and

WHEREAS, Section 251.155(a) of the Texas Transportation Code provides authority for the Grimes County Commissioners Court to adopt regulations establishing a system of traffic control devices in restricted traffic zones; and

WHEREAS, Section 251.161(a)(3) of the Texas Transportation Code establishes authority for the Grimes County Commissioners Court to impose a criminal penalty for violating an order of Commissioners Court; and

WHEREAS, a public hearing regarding the proposed establishment of "No Thru Truck" zones was held on October 16th, 2024 as required by Section 251.152 of the Texas Transportation Code, with advance notice posted as required by Section 251.152 of the Texas Transportation Code; and

WHEREAS, the Grimes County Commissioners Court has determined that the imposition of "No Thru Truck" restrictions are necessary on the following County Roads:

- CR 175 from SH 30 to CR 172
- CR 173 from CR 174 to CR 175
- CR 174 from SH 30 to FM 244
- CR 166 from FM 244 to CR 164
- Lynn Street from SH 149 to SH 149
- CR 415 from SH 6 to CR 416
- CR 416 from SH 105 to End
- CR 413 from SH 6 to CR 415
- CR 414 from TX 6 BR to TX 6 BR
- CR 413 from SH 6 to CR 414
- CR 450 from TX 6 BR to SH 6
- CR 108 from FM 39 to FM 244
- CR 110 from FM 39 to FM 244
- CR 118 from FM 39 to FM 244

- CR 420 from TX 6 BR to TX 6 BR
- CR 420A from CR 420 to End
- Pinebrook Drive/CR 202 from SH 249 to FM 1774
- Forest Lane / Pine Lane / Hickory Road from Clark Road to Post Oak Drive.
- Post Oak Drive from Cedar Road to CR 302

NOW, THEREFORE, BE IT ORDERED by the County of Grimes, State of Texas that the following "No Thru Truck" Order be approved and effective once all requirements of the Order are met.

ORDER OF GRIMES COUNTY, TEXAS ESTABLISHING "NO THRU TRUCK" ZONES

Article I. Definitions

Section 1.1

Commissioners Court: Grimes County, Texas, acting by and through its Commissioners Court.

Person: An individual, company, partnership, firm, corporation, association, or other legal entity.

Thru Truck: A Truck accessing any County Road specifically identified in Section 2.1 of this Order with no intermediate stop for pickup, delivery, or service in connection with its operation.

Truck: A motor vehicle designed, used, or maintained primarily to transport property, except those designed, used, or maintained to carry no more than three (3) cubic yards of property.

Article II. Thru Trucks Restriction

Section 2.1 The Commissioners Court of Grimes County, Texas, imposes a restriction prohibiting Thru Trucks traveling on the following County Roads and between the limits associated with each County Road:

- CR 175 from SH 30 to CR 172
- CR 173 from CR 174 to CR 175
- CR 174 from SH 30 to FM 244
- CR 166 from FM 244 to CR 164
- Lynn Street from SH 149 to SH 149
- CR 415 from SH 6 to CR 416
- CR 416 from SH 105 to End
- CR 413 from SH 6 to CR 415
- CR 414 from TX 6 BR to TX 6 BR
- CR 413 from SH 6 to CR 414
- CR 450 from TX 6 BR to SH 6
- CR 108 from FM 39 to FM 244
- CR 110 from FM 39 to FM 244
- CR 118 from FM 39 to FM 244
- CR 420 from TX 6 BR to TX 6 BR
- CR 420A from CR 420 to End
- Pinebrook Drive/CR 202 from SH 249 to FM 1774
- Forest Lane / Pine Lane / Hickory Road from Clark Road to Post Oak Drive.
- Post Oak Drive from Cedar Road to CR 302

Section 2.2 The Grimes County Commissioners Court shall cause signs to be installed in a manner easily readable to any operator of a motor vehicle and according to Texas Manual of Uniform Traffic Control Devices as established by Section 544.001 of the Texas Transportation Code. The signs shall be placed in a manner to allow vehicle operators time to assess their route prior to entering a No Thru Truck zone.

Section 2.3 The Grimes County Commissioners Court shall require that the Road and Bridge Department maintain a document containing maps of "No Thru Truck" zones on the Department's website.

Article III. Offense

Section 3.1 It shall be unlawful for any person to operate a vehicle in violation of this Order.

Section 3.2 A person that violates this order commits a misdemeanor offense punishable by a fine not to exceed \$200 if the person operates a truck in violation of this Order.

Article IV. Effective Date

Section 4.1 The Order becomes effective October 16th, 2024 with specific "No Thru Truck" zones becoming effective once Grimes County has caused signs to be installed as required by this Order.

Article V. General Provisions

Section 5.1 All orders or parts of orders inconsistent with the terms of this Order are hereby repealed; provided, however, that such repeal shall be only to the extent of such inconsistency of other orders regulating and governing the subject matter covered by this Order.

Section 5.1 All the provisions of this Order are hereby declared to be severable, and if any provision herein is judicially declared to be invalid or unconstitutional, such judicial declaration shall not invalidate or affect the remaining provisions of this Order which will remain in full force and effect.

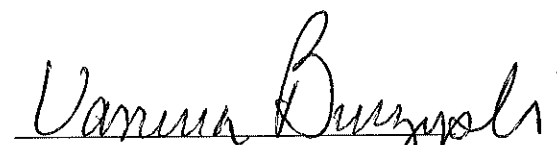
PASSED and ADOPTED by the Grimes County Commissioners Court on this 16th day of October, 2024.

BY:



Joe Fauth, III, County Judge

ATTEST:



Vanessa Burzynski, County Clerk

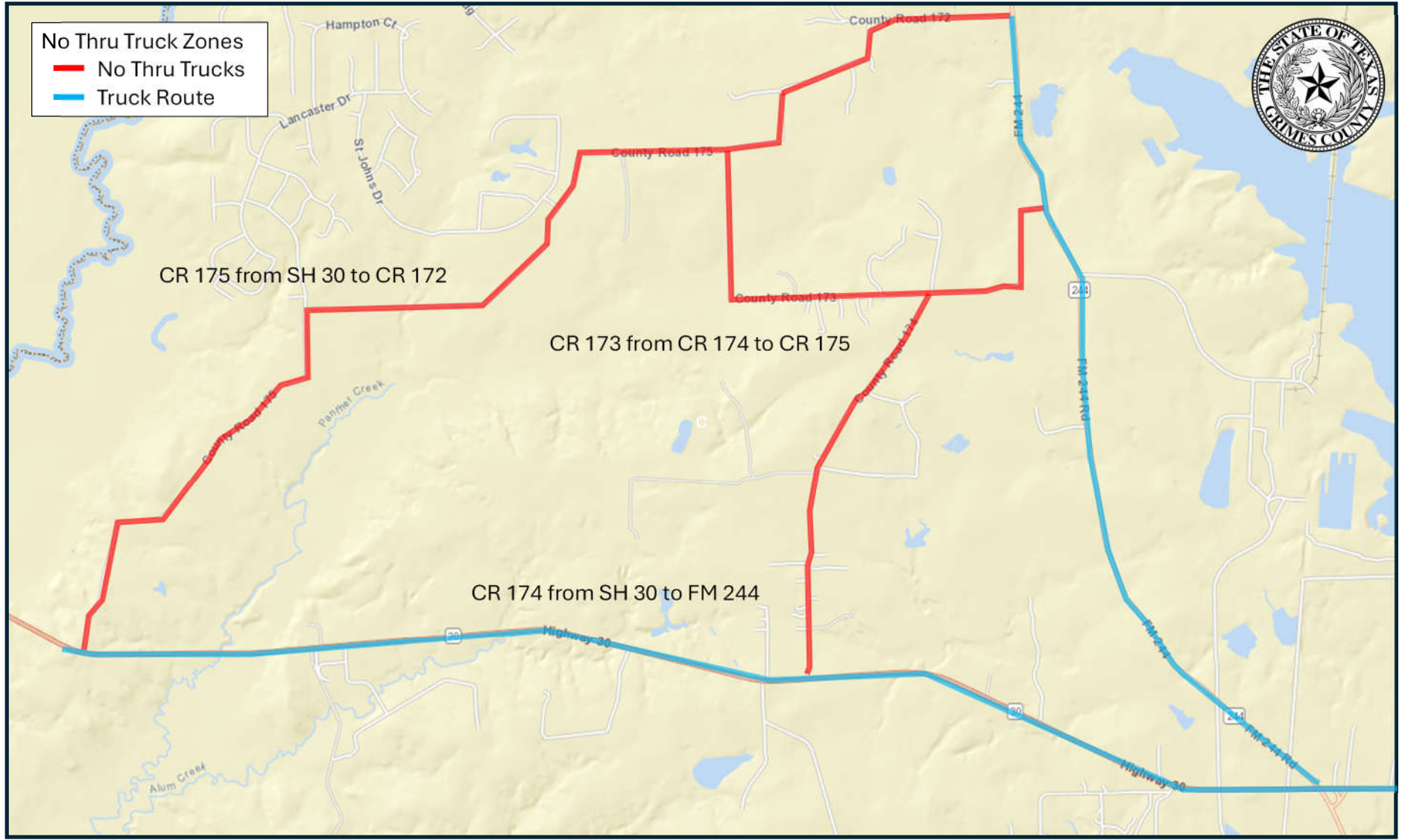
No Thru Truck Zones
— No Thru Trucks
— Truck Route



CR 175 from SH 30 to CR 172

CR 173 from CR 174 to CR 175

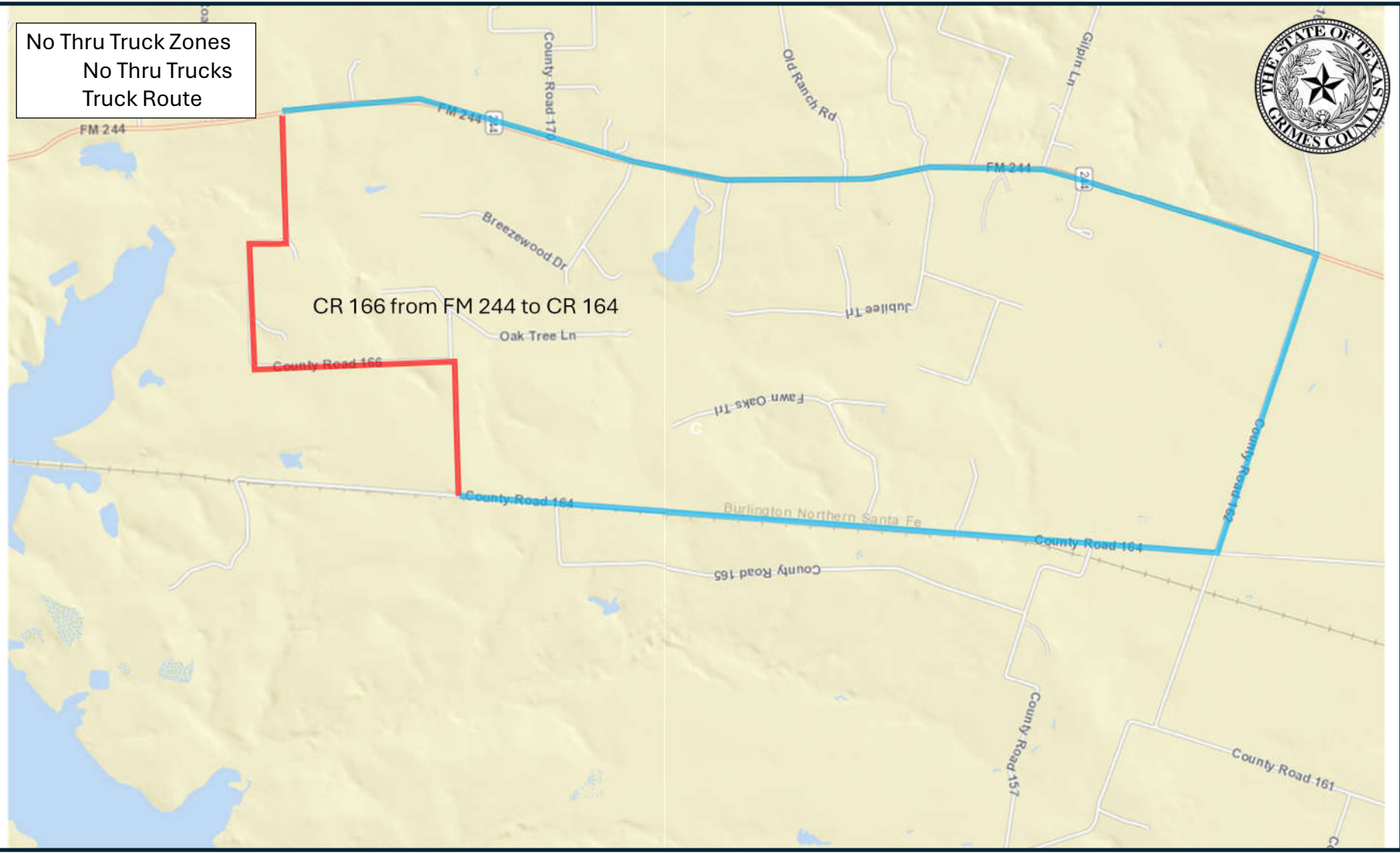
CR 174 from SH 30 to FM 244



No Thru Truck Zones
No Thru Trucks
Truck Route



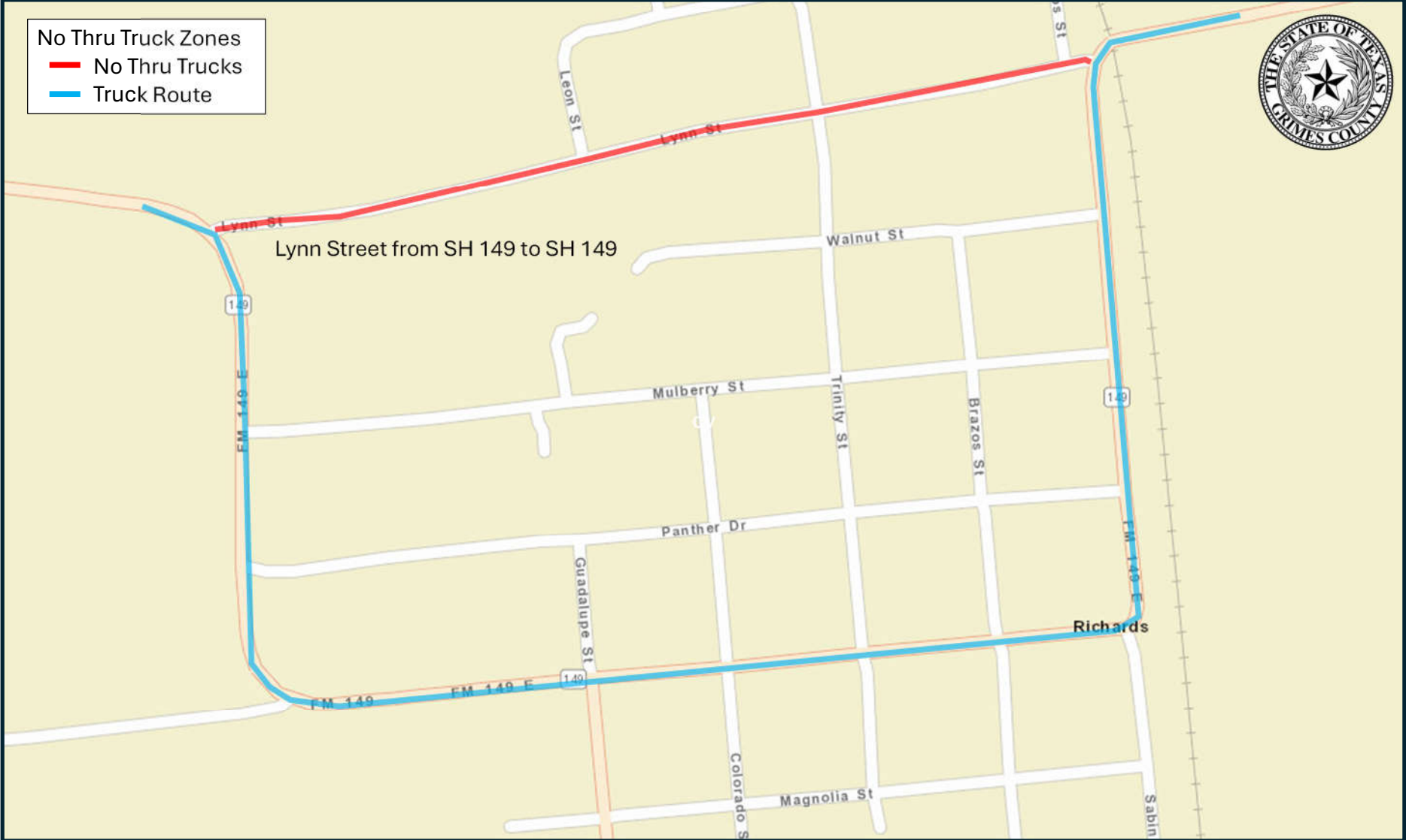
CR 166 from FM 244 to CR 164





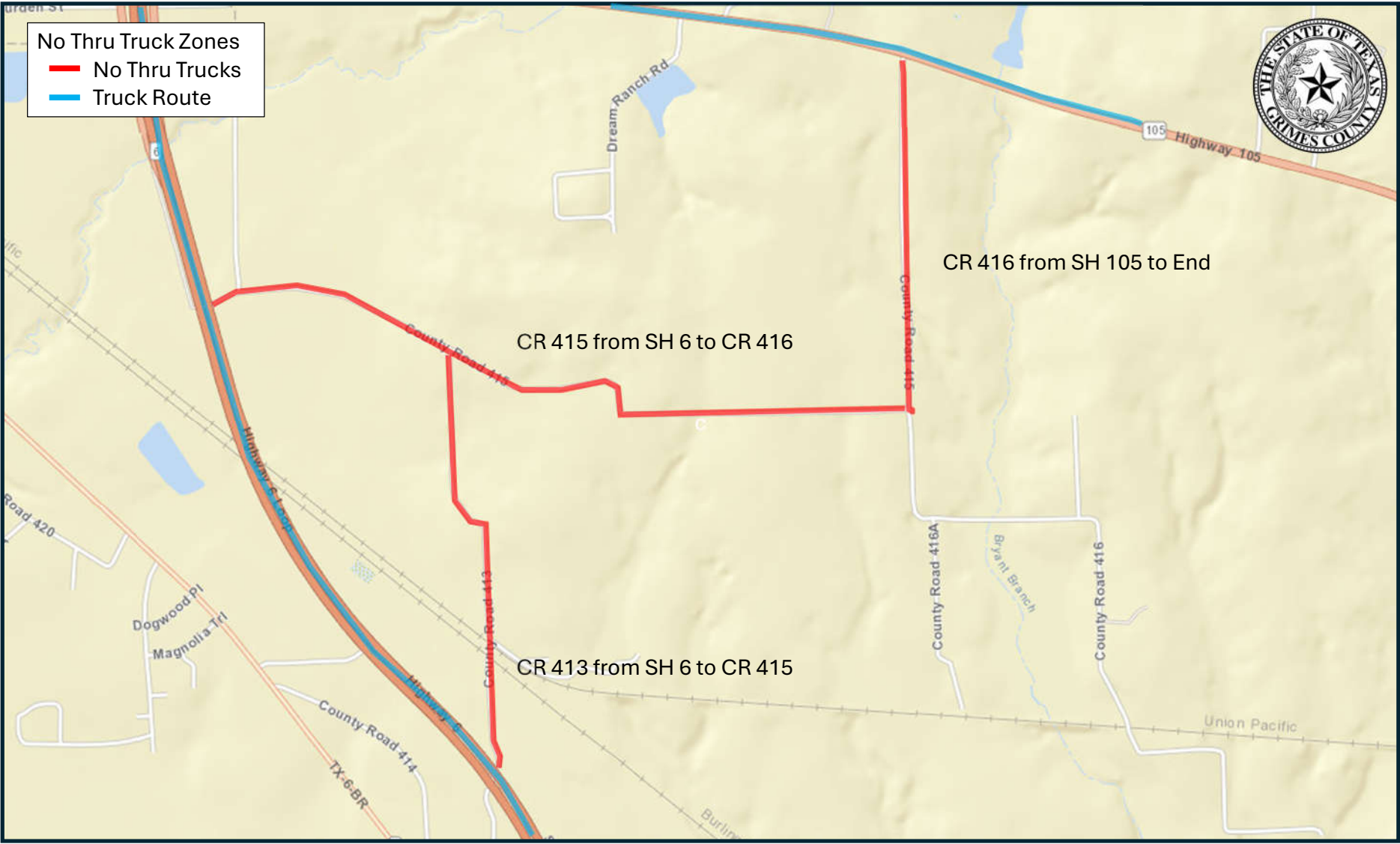
- No Thru Truck Zones
- No Thru Trucks
- Truck Route

Lynn Street from SH 149 to SH 149





- No Thru Truck Zones
- No Thru Trucks
- Truck Route



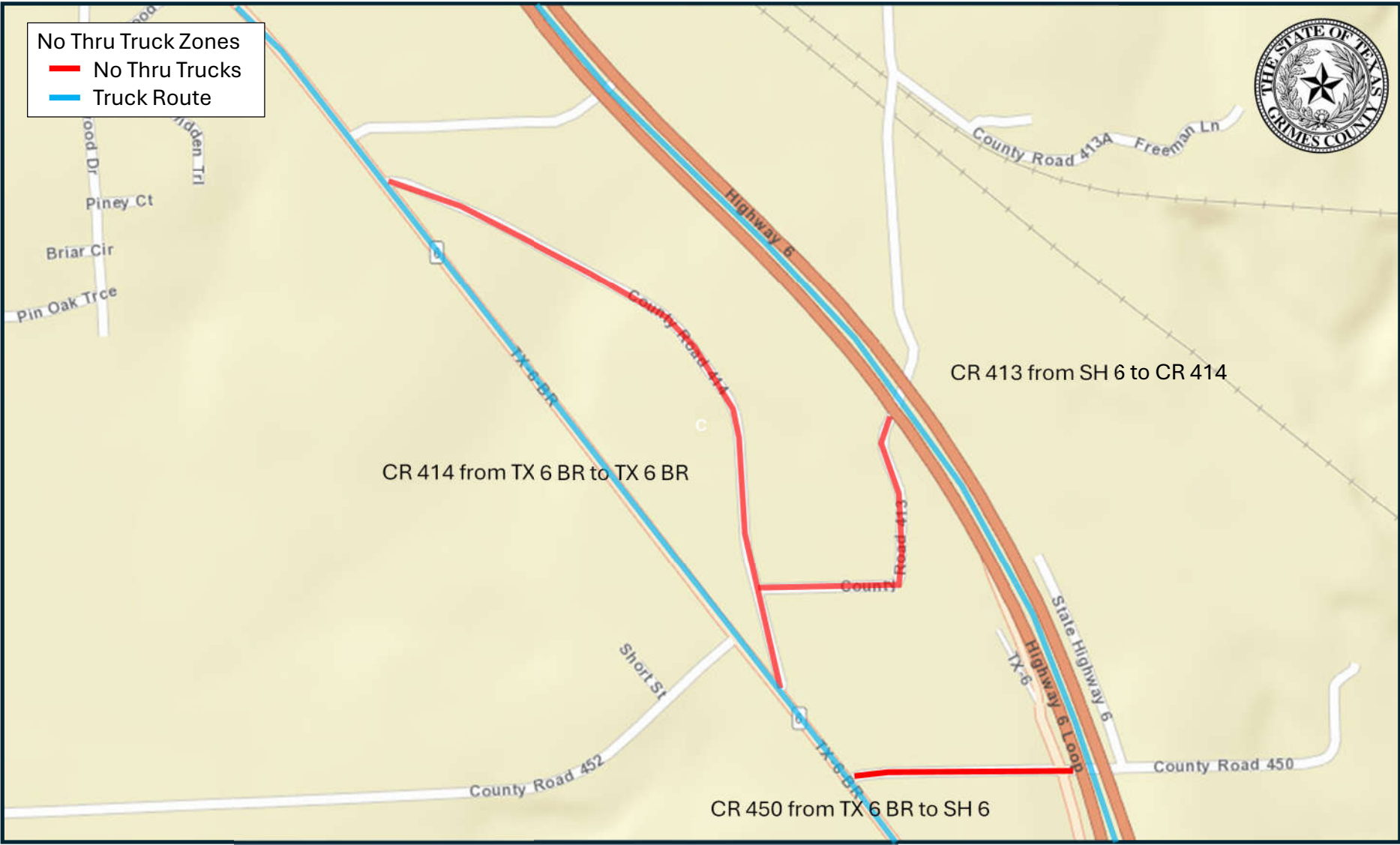
CR 415 from SH 6 to CR 416

CR 416 from SH 105 to End

CR 413 from SH 6 to CR 415



No Thru Truck Zones
— No Thru Trucks
— Truck Route

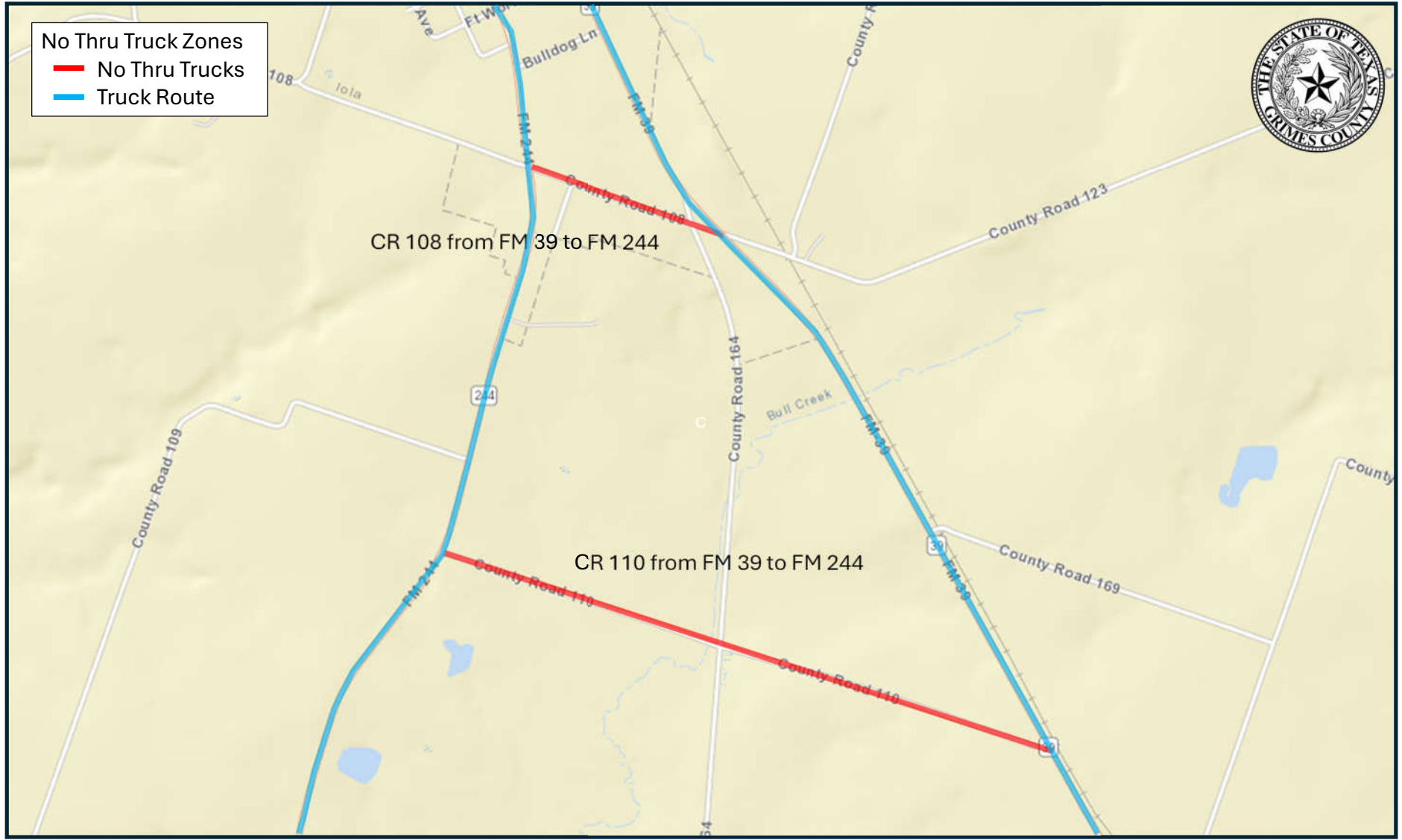


No Thru Truck Zones
— No Thru Trucks
— Truck Route



CR 108 from FM 39 to FM 244

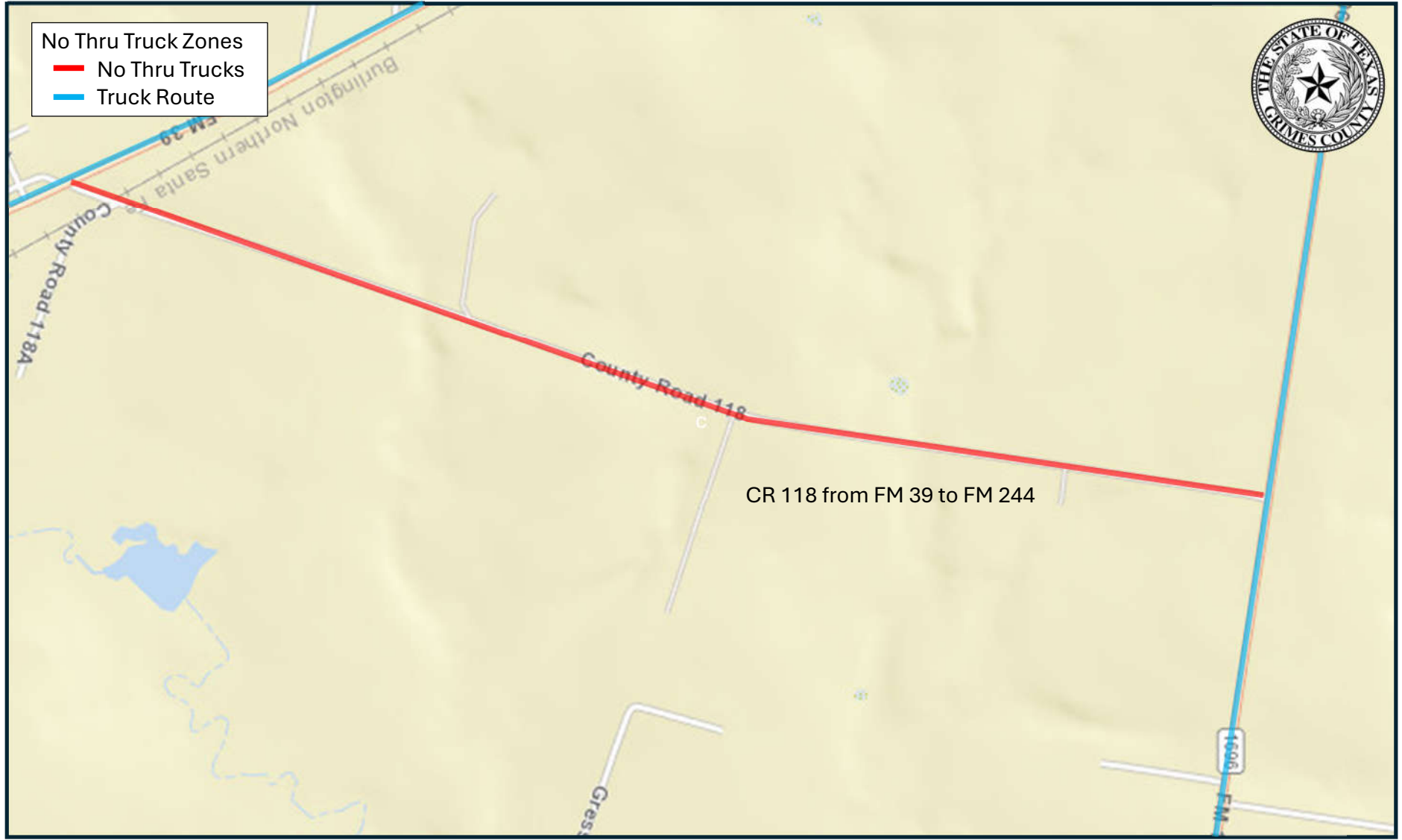
CR 110 from FM 39 to FM 244



No Thru Truck Zones
— No Thru Trucks
— Truck Route



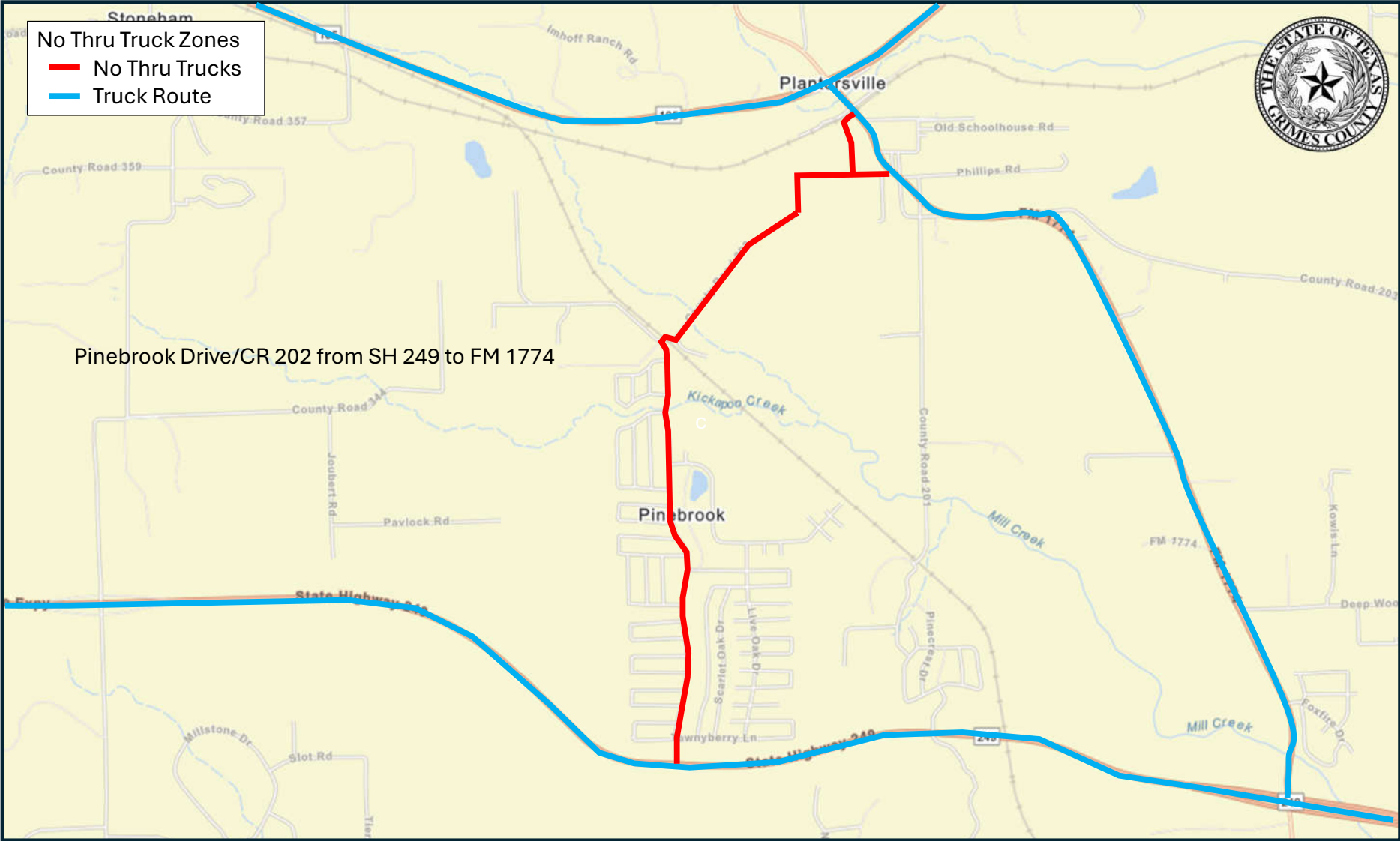
CR 118 from FM 39 to FM 244





No Thru Truck Zones
— No Thru Trucks
— Truck Route

Pinebrook Drive/CR 202 from SH 249 to FM 1774





No Thru Truck Zones
— No Thru Trucks
— Truck Route

Post Oak Drive from Cedar Road to CR 302

Forest Lane / Pine Lane / Hickory Road
from Clark Road to Post Oak Drive

